

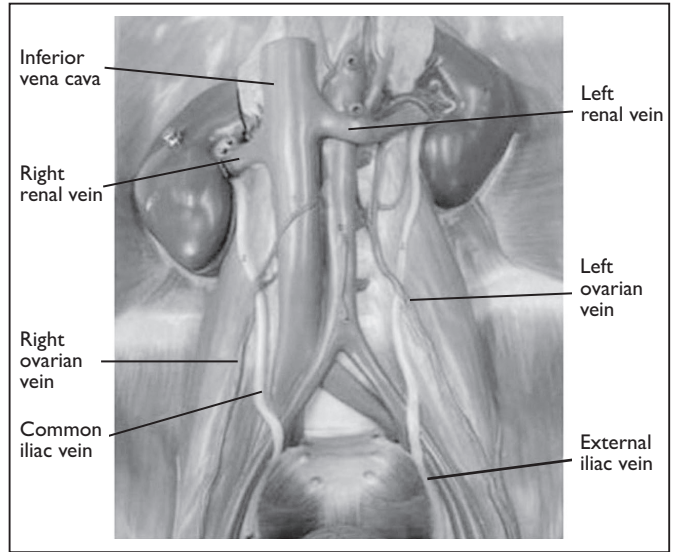
Letters to the Editor

Dear Editor

I always read MBMJ and read this year's summer edition a few weeks ago. On page 42 there is a photograph of the posterior abdominal wall which in fact is not very clear. However, both ureters are clearly visualised. Unfortunately the right ureter is indicated as being the common iliac vein and the left ureter as the external iliac vein. The students would have been better advised to get a picture of the posterior abdominal wall from any good Anatomical Textbook or Dissection manual particularly if the labelling was in place!

I am interested to find out how many of your surgical and gynaecological colleagues have brought the above to your attention.

Glen Staff, MD FRCS
Urological Surgeon, retired



The editorial team puts a collective hand up. In order to prepare the image for publication the arrows labelling the structures had to be redesigned, sadly the editor missed the error. He would not have missed the error if we had published the original picture in colour as it was presented to us. The vein in the picture is grey structure

adjacent to the light grey ureter! He is grateful to his reader for the comment and as ever is pleased to receive such on any matters, of fact or opinion. In the interests of economy we have decided not to publish the original colour picture.

Did anybody else notice our mistake?

The Lancaster Medical Museum



The Lancaster Medical Museum came into being at a Christmas party in 1989 and its original members have continued to provide support and gather artefacts.

Valerie Anderson, who practised as a cardiologist until 2001, turned her attention in retirement to

collecting artefacts which she used to devise a quiz, published under the by-line of 'quid est hoc?'. Fans of the BBC television quiz 'Pointless' will no doubt be amused that Valerie has defeated the readership in her quest for obscurity many times in 31 contests.

The editor would like to take this opportunity to thank her for her imagination and resourcefulness over the years and to reflect on the support given to the Museum by founder members Paul Whitfield, David Jordison, Miles Rucklidge, John Dyer, John Carne, and current UHMB manager Andy Waddington and Chief Executive Jackie Daniel. The professional help Sue Ashworth, Collections Manager of Lancashire Museums Service, has been pivotal in establishing the museum. The museum committee is looking for new members to take on the challenges of providing a resource for reflection on medical progress.

The collection is now in the Queen Victoria Centre in Morecambe.

